



PartLibraries.org is a web portal for the collection and dissemination of component data for use in standards based reliability predictions and other reliability analyses. When used correctly, these part libraries can help to save time and improve the accuracy of your MIL-HDBK-217, Bellcore/Telcordia or NSWC Mechanical reliability predictions.



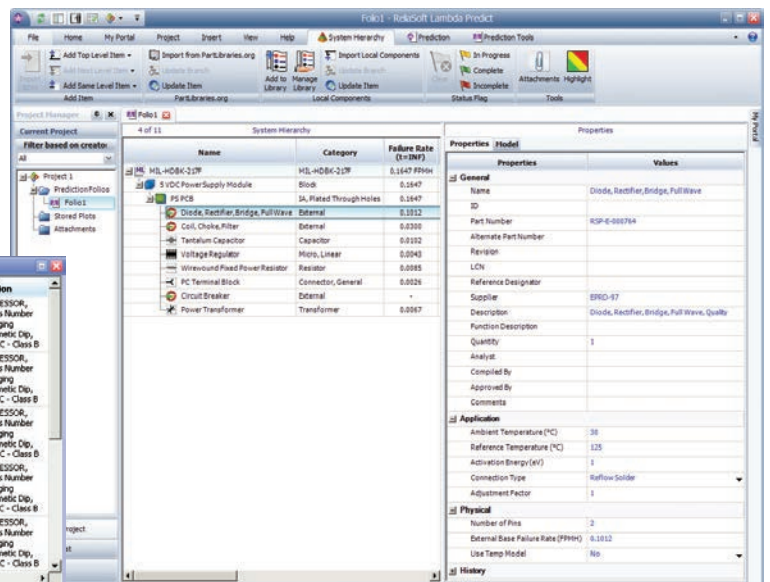
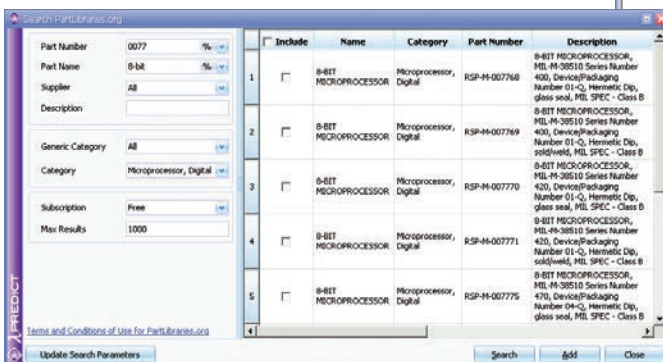
This resource is currently available **exclusively to users of ReliaSoft's Lambda Predict** software, which provides a specialized interface that makes it easy to find and import the information you need. All Lambda Predict users receive free access to the integrated circuit (IC) component definitions published in **MIL-M-38510**, the electronic component failure rates published in **EPRD-97** (Electronic Parts Reliability Data) and the mechanical, electrical and electromechanical component failure rates published in **NPRD-95** (Nonelectronic Parts Reliability Data).

Multiple Ways to Easily Access the Information You Need

The Lambda Predict software provides several flexible options to make it easy for you to find the component you need and import the data into your reliability prediction analysis. This includes **specialized search utilities** that make it easy to search the library based on category, part number, supplier, part name and/or part description.

The software can also compare each part number in a system configuration against the data in PartLibraries.org. If there is a match, Lambda Predict can **automatically import** the reliability prediction parameters and/or failure rate.

Search by category, part number, supplier, name and/or description



Easily import the failure rate or the reliability prediction parameters required by the standard

EXPAND YOUR COMPONENT LIBRARY WITH A PARTLIBRARIES.ORG SUBSCRIPTION

If you want access to **more than 300,000 commercial electronic components** with reliability prediction parameters predefined based on the published manufacturer spec sheets, you can also purchase a yearly subscription that offers unlimited access to the full parts data library. The library currently contains component data from **more than 140 manufacturers**, and the information will continue to be updated in response to user requests and as new data become available. Available component types include:

Cables and Wires

Capacitors

Circuit Protection

- Circuit Breakers and Fuses

Discrete Semiconductors

- Diodes, Transistors and Thyristors

Frequency Control

- Crystals and Oscillators

Integrated Circuits (ICs)

- Analog ICs, Digital ICs, Memory, Microprocessors

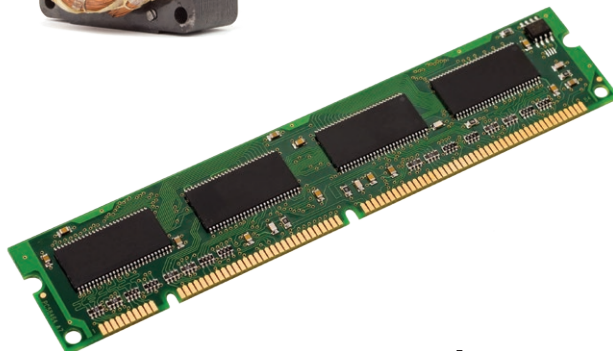
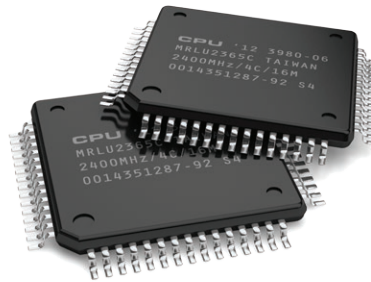
Magnetic

- Coils, Inductors and Transformers

Optoelectronics

Relays and Switches

Resistors and Thermistors



<http://www.PartLibraries.org>